



DATA DISPLAY GROUP

Datasheet

Next Generation Compact Panel

CP-G185XW01V1-A00

DI-05-006

Version 1.2.0

The information contained in this document has been carefully researched and is, to the best of our knowledge, accurate. However, we assume no liability for any product failures or damages, immediate or consequential, resulting from the use of the information provided herein. Our products are not intended for use in systems in which failures of product could result in personal injury. All trademarks mentioned herein are property of their respective owners. All specifications are subject to change without notice.



Table of Contents

1	Revision History	3
2	Description	3
3	Characteristics	4
3.1	Further Specifications.....	4
3.1.1	TFT Controller	4
3.1.2	TFT-Display	4
4	Mechanical Drawing	5
5	Optional Accessories	6
5.1	Kit Input Connector Board including cable set	6
5.2	Single Cables (Power Cable, DVI, VGA, RS232 interface)	7
5.3	External (4+1) Button OSD Keypad	8
5.4	IR-Remote.....	8



1 Revision History

Date	Rev.No.	Description	Page
10.02.2014	1.0	Initial release	All
03.03.2014	1.1	Changed Description	3
18.05.2015	1.2.0	HDMI Cable added	7

2 Description

The DD Group's Next Generation Compact Panel Series is an open frame design which is based on the PrismaCompact-Media. This modular based construction allows an easy mounting through a spread TFT-Display assortment.

The PrismaCompact-Media providing a RGB, HDMI/DVI, DP, USB/RS232 interface and supports resolutions from VGA up to WUXGA at a maximum of 85Hz refresh rate with automatic up- and downscaling function to full screen size, reverse scan and much more.

Our CP-G185XW01V1-A00 15" XGA LED Compact Panel with a high quality screen image and is designed for a wide temperature range usage and it gives a lot of convenience to the user in installing various applications such as gaming, amusement, industry and so on and accessing the GUI (Graphic User Interface).



3 Characteristics

Items	Unit	Specification
Type	LCD TFT	CP-G185XW01V1-A00
Screen Diagonal	[inch]/[mm]	18.51/470.1
Physical Size H x V x D	[mm]	430.4 x 254.6 x 16.4
Active Area H x V	[mm]	409.8 x 230.4
Pixels H x V		1366 (x3) x 768
Supported Colors		16,7M (8bit)
Brightness	[cd/m ²]	300
Viewing Angle		6h
Nominal Input Voltage	[V]	12 typ.
Typical Power Consumption	[W]	17 typ.
Weight	[kg]	1,82 max.
Electrical Interface		RGB, TMDS, DisplayPort, UART
Temperature Range T _{OP}	[°C]	0...+60

3.1 Further Specifications

3.1.1 TFT Controller

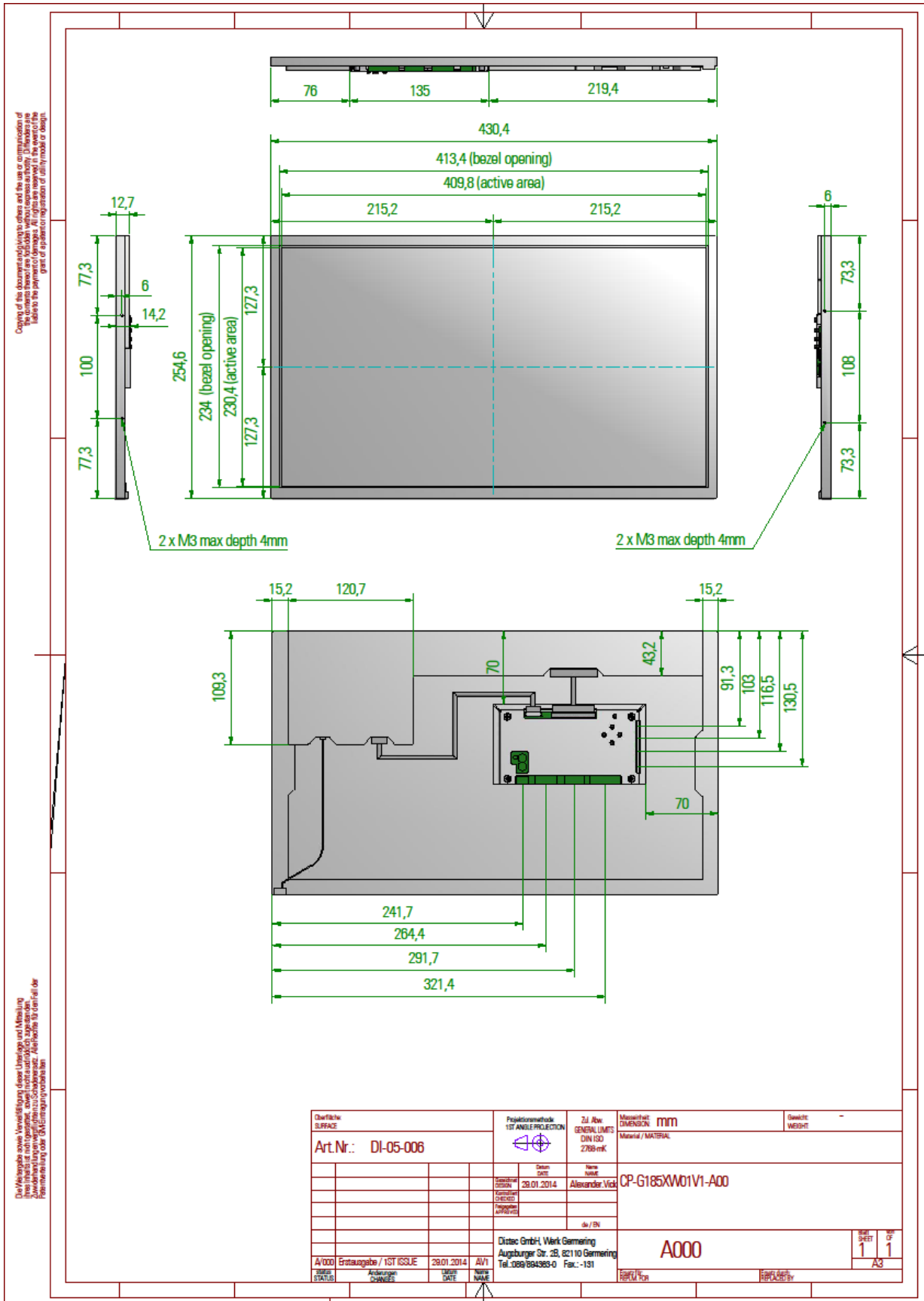
Distec PrismaCOMPACT-Media [Datasheet PrismaCOMPACT-Media](#)

3.1.2 TFT-Display

AUO G185XW01V1 [Datasheet G185XW01V1](#)



4 Mechanical Drawing

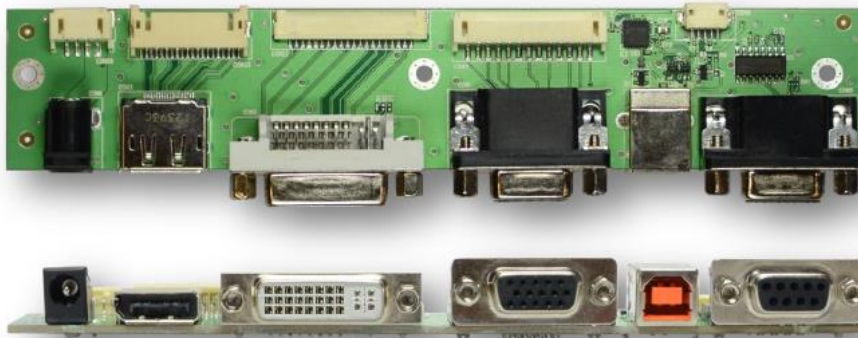




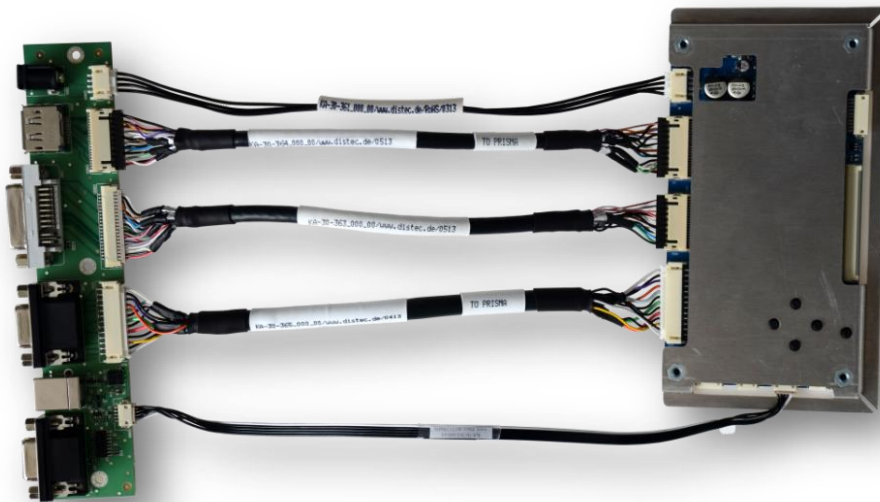
5 Optional Accessories

5.1 Kit Input Connector Board including cable set

- Connectors: Power-Jack, DP, DVI-I, VGA DSUB15, [USB-B/DSUB9] (Serial interface for firmware update and remote control)
- IF 396 cable connection set 20cm (Power, DP, DVI, RGB, UART)



ZU-02-396 IF396-00 RDDP-UR Input Board P-C Media



Order number:

KI-90-008 Kit CP-Input Board IF396 incl. cables

(Kit including the following components)

- ZU-02-396 IF396-00 RDDP-UR Input Board P-C Media
- KA-30-365 Cable RGB IF396/PrismaCompactMedia 20cm
- KA-30-363 Cable DVI IF396/PrismaCompactMedia 20cm
- KA-30-364 Cable DP IF396/PrismaCompactMedia 20cm
- KA-30-361 Cable POW IF396/PrismaCompactMedia 20cm
- KA-30-362 Cable UART IF396/PrismaCompactMedia 25cm



5.2 Single Cables (Power Cable, DVI, VGA, RS232 interface)

RS232 interface + cable for Remote Control and Firmware update

ZU-02-370 IF370-00-R10programingadap.Pris./Art.NET
KA-30-101 Cable Service/Debug ArtistaNET/Pris 80cm



VGA Cable

KA-03-027 VGA Cable LTM150XI/170EI female 80cm



DVI Cable

KA-30-382 Cable DVI-D Female / PCompactMedia 80cm



HDMI Cable

KA-30-577 Cable HDMI-A Male / PCompactMedia 80cm



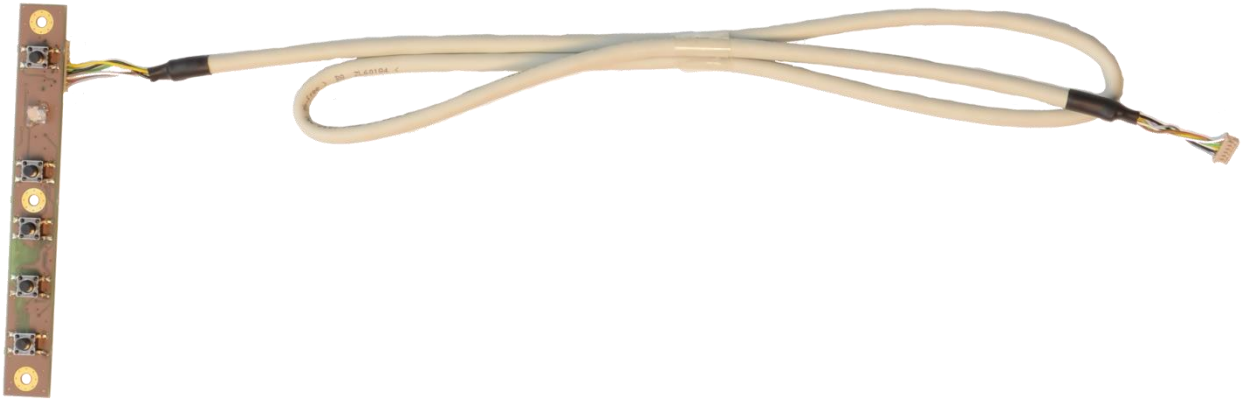
Power Supply Cable

KA-30-030 Power Supply Cable DI170/190S01 80cm





5.3 External (4+1) Button OSD Keypad



External (4+1) Button OSD Keypad:

- ZU-02-398 IF398-00-OSD-Board-Universal
- KA-30-394 OSD-Cable IF398

5.4 IR-Remote

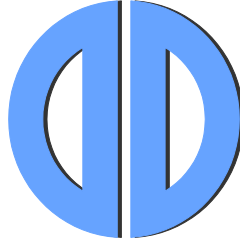
- Alternative to internal/external keypads, the CompactPanel can also be controlled through a remote control device. In order to communicate through IR, an IR-receiver can be attached via connector to the CompactPanel.



IR-Remote Set:

- RC-10-004 IR Remote Contr. PrII RC5-Code
- KA-30-094 IR Receiver f. Prisma II incl cable 40cm
- DS-30-666 Batterie +AAA Remote Control Pri II

Our company network supports you worldwide with offices in Germany, Great Britain, Italy, Turkey and the USA. For more information please contact:



DATA DISPLAY GROUP

Distec GmbH

Augsburger Str. 2b
82110 Germering
Germany

Phone: +49 (0)89 / 89 43 63-0
Fax: +49 (0)89 / 89 43 63-131
E-Mail: info@datadisplay-group.de
Internet: www.datadisplay-group.de

Display Technology Ltd.

5 The Oaks Business Village
Revenge Road, Lordswood
Chatham, Kent, ME5 8LF
United Kingdom

Phone: +44 (0)1634 / 67 27 55
Fax: +44 (0)1634 / 67 27 54
E-Mail: info@datadisplay-group.co.uk
Internet: www.datadisplay-group.co.uk

Apollo Display Technologies, Corp.

87 Raynor Avenue, Unit 1 Ronkonkoma, NY
11779

United States of America

Phone: +1 631 / 580-43 60
Fax: +1 631 / 580-43 70
E-Mail: info@datadisplay-group.com
Internet: www.datadisplay-group.com

Sales Partner:

REM Italy s.a.s.

di Michieletto Flavio & C.
Via Obbia Bassa, 10
I-35010 Trebaseleghe (PD)
Italy
Phone: +39 335 521 37 89
E-Mail: info@remitaly.com
Internet: www.remitaly.com

Sales Partner:

DATA DISPLAY BİLİŞİM TEKNOLOJİLERİ İÇ VE DIŞ TİCARET LİMİTED ŞİRKETİ

Barbaros Mh Ak Zamabak Sk A Blok
D:143 Ataşehir/İstanbul
Turkey
Phone: +90 (0)216 / 688 04 68
Fax: +90 (0)216 / 688 04 69
E-Mail: info@data-display.com.tr
Internet: www.data-display.com.tr