



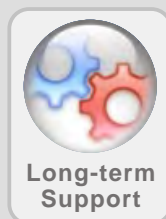
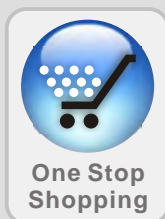
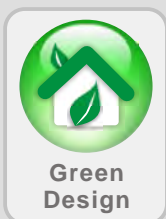
# NAVPIXEL

Marine Computing



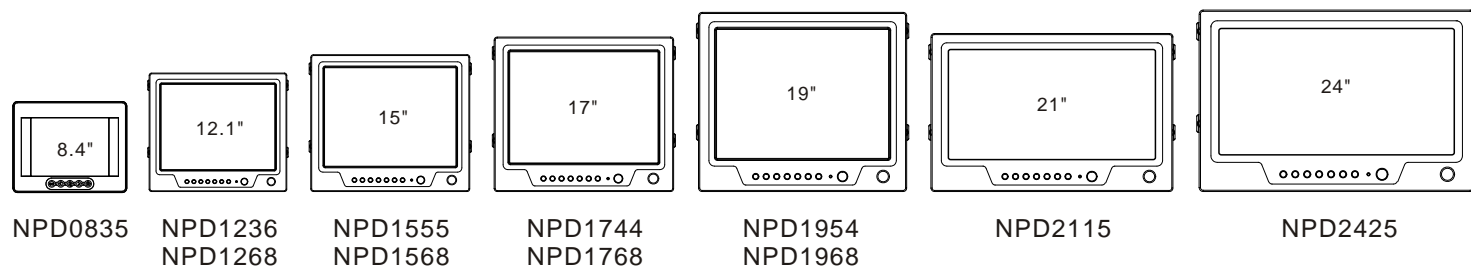
## Marine Advantages:

- Sunlight Readable Marine Display
- High Brightness LCD Technology
- Anti-vibration and Anti-corrosion
- Reliability Products Compliant with IEC60945
- AOT optical Bonding Technology
- Advance Multi Touch Technology



Go to find [www.litemax.com](http://www.litemax.com)

# Marine Display



## NAVPIXEL™ Marine Display Series

### IP65/IP68 Sunlight Readable Marine Display

NAVPIXEL™ NPD is a new series of marine grade display. With high-performance sunlight viewability LED backlight LCD panels, these rugged touch monitors are specially engineered to survive from the most demanding working environment. Housed in the milled billet aluminum case, the slim-profile NAVPIXEL™ NPD displays are all light weight and watertight with fully sealed IP65 connectors (NPD0835 up to IP68). In addition, through integrating touchscreen technology and sunlight readable LCD, these monitors can be used not only leisure activities such as fishing and cruising but also more professional marine projects!

#### Main Features

- IP65 Marine Grade Display (NPD0835 up to IP68)
- 1000 nits Sunlight Readable LCD
- Advanced Optical Bonding (AOT)
- Resistive & PCT Touch/AR Glass Support
- Long Life, Low Power Consumption LED Backlight
- Night Mode Support
- Wide Dimming Potentiometer
- Rich I/O: VGAX2, DVIx2, CVBSx3 (17" above)
- PIP Function Support (17" above)
- -20°C~60°C Wide Operation Temperature
- 9~36V DC input
- Slim Bezel Design
- Anti-Shock and Anti-Vibration Resistance
- Conformal Coating

#### Application

- Marine



# 8.4" Specifications

## Features:

- 1000 nits Sunlight Readable LCD
- LED Backlight
- Wide Operating Temperature
- Advanced Optical Bonding (AOT)
- IR Touch Support
- IP68 Design
- AR Glass Support
- 9-36V DC Input



## IP68 Sunlight Readable Marine Display

| Model Number          | NPD0835                                    |
|-----------------------|--|
| Description           | 8.4" IP68 Sunlight Readable Marine Display |
| <b>LCD Display</b>    |  |
| Backlight             | 8.4" LED Backlight                         |
| Active Display Area   | 170.4x127.8 mm                             |
| Brightness            | 1000 cd/m <sup>2</sup>                     |
| Resolution            | 800x600 (SVGA)                             |
| Contrast Ratio        | 600:1                                      |
| Pixel Pitch (mm)      | 0.213(H)x0.213(V)                          |
| Viewing Angle         | +60°~60°(H), +55°~65°(V)                   |
| Display Color         | 16.2M                                      |
| Response Time         | Tr 10ms/ Tf 20ms                           |
| Inputs                | VGAX1                                      |
| <b>Mechanical</b>     |  |
| IP Rating             | IP68 (NEMA6P Submersible)                  |
| Construction          | Rugged Aluminum Alloy Chassis              |
| Mounting              | RAM mount, VESA mount                      |
| Dimension             | 250mm (W) x 200mm(H) x 64mm(D)             |
| Net Weight            | 3kg  |
| <b>Power</b>          |  |
| Voltage               | DC Input 9~36V                             |
| Power Consumption     | 9.5W                                       |
| <b>Environmental</b>  |  |
| Operating Temperature | -20°C~60°C (-4°F~140°F)                    |
| Storage Temperature   | -30°C~75°C (-22°F~167°F)                   |
| Certification         | CE/FCC                                     |
| Marine Type Approval  | IEC 60945 BV Marine and IACS-E10 Approval  |



Specifications are subject to change without notice. All brands or product names are trademarks or registered trademarks of their respective companies.

# 12.1" Specifications

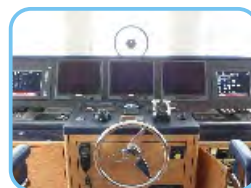
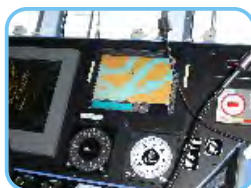
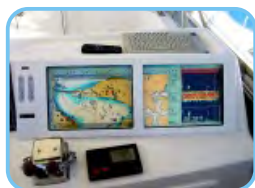
## Features:

- 1000 nits Sunlight Readable LCD
- LED Backlight
- Wide Operating Temperature
- Advanced Optical Bonding (AOT)
- Resistive & PCT Touch Support
- Front IP65 Design
- AR Glass Support
- 9-36V DC Input



## IP65 Sunlight Readable Marine Display

| Model Number                   | NPD1236   | NPD1268                 |
|--------------------------------|---|-------------------------|
| <b>Description</b>             | 12.1" IP65 Sunlight Readable Marine Display                     |                         |
| <b>LCD Display</b>             |   |                         |
| <b>Backlight</b>               | 12.1" LED Backlight   | 12.1" LED Backlight     |
| <b>Active Display Area</b>     | 245.76x184.32 mm  | 245.76x184.32 mm        |
| <b>Brightness</b>              | 1000 cd/m <sup>2</sup>  | 1600 cd/m <sup>2</sup>  |
| <b>Resolution</b>              | 1024x768 (XGA)  | 1024x768 (XGA)          |
| <b>Contrast Ratio</b>          | 700:1   | 700:1                   |
| <b>Pixel Pitch (mm)</b>        | 0.24(H)x0.24(V)   | 0.24(H)x0.24(V)         |
| <b>Viewing Angle</b>           | 140°(H), 140°(V)  | 160°(H), 160°(V)        |
| <b>Display Color</b>           | 262k  | 262k                    |
| <b>Response Time</b>           | Tr 6ms/ Tf 17ms   | 35ms                    |
| <b>Inputs</b>                  | VGAx1, DVIX1, Composite x3, RS232x1, USBx1                      |                         |
| <b>Mechanical</b>              |   |                         |
| <b>IP Rating</b>               | Fascial waterproof to IP65 standards when console mounted.      |                         |
| <b>Construction</b>            | Rugged Aluminum Alloy Chassis                                   |                         |
| <b>Mounting</b>                | Panel (Flush) mount, VESA mount                                 |                         |
| <b>Dimension (WxHxD)</b>       | 297.2mm x 256mm x 56mm  | 316mmx 272.3mmx 56mm    |
| <b>Net Weight</b>              | 2.5kg   | 2.5kg                   |
| <b>Power</b>                   |   |                         |
| <b>Voltage</b>                 | DC Input 9~36V  | DC Input 9~36V          |
| <b>Power Consumption</b>       | 24W   | 14W                     |
| <b>Environmental</b>           |   |                         |
| <b>Operating Temperature</b>   | -20°C~60°C (-4°F~140°F)   | -20°C~60°C (-4°F~140°F) |
| <b>Storage Temperature</b>     | -20°C~70°C (-4°F~158°F)   | -20°C~70°C (-4°F~158°F) |
| <b>Touch Screen (Optional)</b> | <input type="checkbox"/> Resistive <input type="checkbox"/> PCT |                         |
| <b>Certification</b>           | CE/FCC  |                         |
| <b>Marine Type Approval</b>    | IEC 60945 BV Marine and IACS-E10 Approval                       |                         |



# 15" Specifications

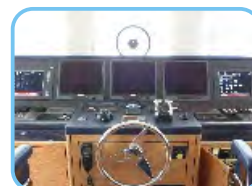
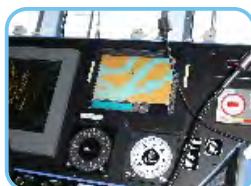
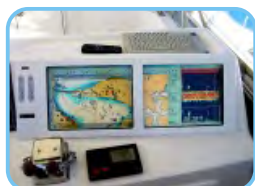
## Features:

- 1000 nits Sunlight Readable LCD
- LED Backlight
- Wide Operating Temperature
- Advanced Optical Bonding (AOT)
- Resistive & PCT Touch Support
- Front IP65 Design
- AR Glass Support
- 9-36V DC Input



## IP65 Sunlight Readable Marine Display

| Model Number                   | NPD1555   | NPD1568                 |
|--------------------------------|---|-------------------------|
| <b>Description</b>             | 15" IP65 Sunlight Readable Marine Display                       |                         |
| <b>LCD Display</b>             |   |                         |
| <b>Backlight</b>               | 15" LED Backlight   | 15" LED Backlight       |
| <b>Active Display Area</b>     | 304.128x228.096 mm  | 304.13x228.1 mm         |
| <b>Brightness</b>              | 1000 cd/m <sup>2</sup>  | 1600 cd/m <sup>2</sup>  |
| <b>Resolution</b>              | 1024x768 (XGA)  | 1024x768 (XGA)          |
| <b>Contrast Ratio</b>          | 700:1   | 700:1                   |
| <b>Pixel Pitch (mm)</b>        | 0.297(H)x0.297(V)   | 0.297(H)x0.297(V)       |
| <b>Viewing Angle</b>           | 160°(H), 160°(V)  | 160°(H), 160°(V)        |
| <b>Display Color</b>           | 16.2M   | 16.7M                   |
| <b>Response Time</b>           | Tr 8ms/ Tf 17ms   | Tr 8ms/ Tf 17ms         |
| <b>Inputs</b>                  | VGAx1, DVIX1, Composite x3, RS232x1, USBx1                      |                         |
| <b>Mechanical</b>              |   |                         |
| <b>IP Rating</b>               | Fascial waterproof to IP65 standards when console mounted.      |                         |
| <b>Construction</b>            | Rugged Aluminum Alloy Chassis                                   |                         |
| <b>Mounting</b>                | Panel (Flush) mount, VESA mount                                 |                         |
| <b>Dimension (WxHxD)</b>       | 352.8mmx 303.3mmx 56.4mm  | TBD                     |
| <b>Net Weight</b>              | 3.5kg   | TBD                     |
| <b>Power</b>                   |   |                         |
| <b>Voltage</b>                 | DC Input 9~36V  | DC Input 9~36V          |
| <b>Power Consumption</b>       | 40.8W   | TBD                     |
| <b>Environmental</b>           |   |                         |
| <b>Operating Temperature</b>   | -20°C~60°C (-4°F~140°F)   | -20°C~60°C (-4°F~140°F) |
| <b>Storage Temperature</b>     | -20°C~70°C (-4°F~158°F)   | -20°C~70°C (-4°F~158°F) |
| <b>Touch Screen (Optional)</b> | <input type="checkbox"/> Resistive <input type="checkbox"/> PCT |                         |
| <b>Certification</b>           | CE/FCC  |                         |
| <b>Marine Type Approval</b>    | IEC 60945 BV Marine and IACS-E10 Approval                       |                         |



Specifications are subject to change without notice. All brands or product names are trademarks or registered trademarks of their respective companies.

# 17" Specifications

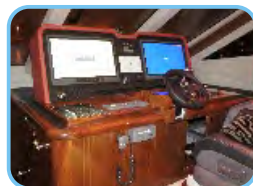
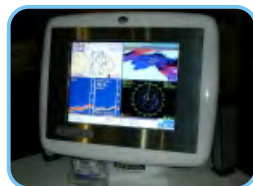
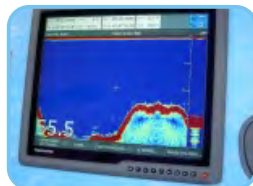
## Features:

- 1000 nits Sunlight Readable LCD
- LED Backlight
- Wide Operating Temperature
- Advanced Optical Bonding (AOT)
- Resistive & PCT Touch Support
- Front IP65 Design
- 9-36V DC Input
- Picture In Picture Function



## IP65 Sunlight Readable Marine Display

| Model Number                   | NPD1744   | NPD1768                  |
|--------------------------------|---|--------------------------|
| <b>Description</b>             | 17" IP65 Sunlight Readable Marine Display                       |                          |
| <b>LCD Display</b>             |   |                          |
| <b>Backlight</b>               | 17" LED Backlight   | 17" LED Backlight        |
| <b>Active Display Area</b>     | 337.92x270.336 mm   | 337.9x270.3 mm           |
| <b>Brightness</b>              | 1000 cd/m <sup>2</sup>  | 1600 cd/m <sup>2</sup>   |
| <b>Resolution</b>              | 1280x1024 (SXGA)  | 1280x1024 (SXGA)         |
| <b>Contrast Ratio</b>          | 800:1   | 1000:1                   |
| <b>Pixel Pitch (mm)</b>        | 0.264(H)x0.264(V)   | 0.264(H)x0.264(V)        |
| <b>Viewing Angle</b>           | 160°(H), 160°(V)  | 160°(H), 160°(V)         |
| <b>Display Color</b>           | 16.7M   | 16.7M                    |
| <b>Response Time</b>           | Tr 3.5ms/ Tf 1.5ms  | Tr 3.6ms/ Tf 1.4ms       |
| <b>Inputs</b>                  | VGAx2, DVIX2, Composite x3, RS232x1, USBx1                      |                          |
| <b>Picture in Picture</b>      | 3 Stages (child, split and wide screen)                         |                          |
| <b>Mechanical</b>              |   |                          |
| <b>IP Rating</b>               | Fascial waterproof to IP65 standards when console mounted.      |                          |
| <b>Construction</b>            | Rugged Aluminum Alloy Chassis                                   |                          |
| <b>Mounting</b>                | Panel (Flush) mount, VESA mount                                 |                          |
| <b>Dimension (WxHxD)</b>       | 384mm x 348.1mm x 57.8mm  | TBD                      |
| <b>Net Weight</b>              | 4.5kg   | TBD                      |
| <b>Power</b>                   |   |                          |
| <b>Voltage</b>                 | DC Input 9~36V  | DC Input 9~36V           |
| <b>Power Consumption</b>       | 50W   | TBD                      |
| <b>Environmental</b>           |   |                          |
| <b>Operating Temperature</b>   | -10°C~50°C (-14°F~122°F)  | -10°C~50°C (-14°F~122°F) |
| <b>Storage Temperature</b>     | -20°C~70°C (-4°F~158°F)   | -20°C~70°C (-4°F~158°F)  |
| <b>Touch Screen (Optional)</b> | <input type="checkbox"/> Resistive <input type="checkbox"/> PCT |                          |
| <b>Certification</b>           | CE/FCC  |                          |
| <b>Marine Type Approval</b>    | IEC 60945 BV Marine and IACS-E10 Approval                       |                          |



# 19" Specifications

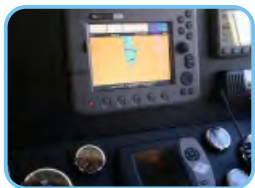
## Features:

- 1000 nits Sunlight Readable LCD
- LED Backlight
- Wide Operating Temperature
- Advanced Optical Bonding (AOT)
- Resistive & PCT Touch Support
- Front IP65 Design
- 9-36V DC Input
- Picture In Picture Function



## IP65 Sunlight Readable Marine Display

| Model Number                   | NPD1954   | NPD1968                  |
|--------------------------------|---|--------------------------|
| <b>Description</b>             | 19" IP65 Sunlight Readable Marine Display                       |                          |
| <b>LCD Display</b>             |   |                          |
| <b>Backlight</b>               | 19" LED Backlight   | 19" LED Backlight        |
| <b>Active Display Area</b>     | 376.32x301.06 mm  | 376.3x301.1 mm           |
| <b>Brightness</b>              | 1000 cd/m <sup>2</sup>  | 1600 cd/m <sup>2</sup>   |
| <b>Resolution</b>              | 1280x1024 (SXGA)  | 1280x1024 (SXGA)         |
| <b>Contrast Ratio</b>          | 1000:1  | 1000:1                   |
| <b>Pixel Pitch (mm)</b>        | 0.294(H)x0.294(V)   | 0.294(H)x0.294(V)        |
| <b>Viewing Angle</b>           | 170°(H), 160°(V)  | 170°(H), 160°(V)         |
| <b>Display Color</b>           | 16.7M   | 16.7M                    |
| <b>Response Time</b>           | Tr 3.6ms/ Tf 1.4ms  | Tr 3.6ms/ Tf 1.4ms       |
| <b>Inputs</b>                  | VGAx2, DVIX2, Composite x3, RS232x1, USBx1                      |                          |
| <b>Picture in Picture</b>      | 3 Stages (child, split and wide screen)                         |                          |
| <b>Mechanical</b>              |   |                          |
| <b>IP Rating</b>               | Fascial waterproof to IP65 standards when console mounted.      |                          |
| <b>Construction</b>            | Rugged Aluminum Alloy Chassis                                   |                          |
| <b>Mounting</b>                | Panel (Flush) mount, VESA mount                                 |                          |
| <b>Dimension (WxHxD)</b>       | 421.9mmx 375.5mmx 56.8mm  | TBD                      |
| <b>Net Weight</b>              | 5.5kg   | TBD                      |
| <b>Power</b>                   |   |                          |
| <b>Voltage</b>                 | DC Input 9~36V  | DC Input 9~36V           |
| <b>Power Consumption</b>       | 55W   | TBD                      |
| <b>Environmental</b>           |   |                          |
| <b>Operating Temperature</b>   | -10°C~50°C (-14°F~122°F)  | -10°C~50°C (-14°F~122°F) |
| <b>Storage Temperature</b>     | -20°C~70°C (-4°F~158°F)   | -20°C~70°C (-4°F~158°F)  |
| <b>Touch Screen (Optional)</b> | <input type="checkbox"/> Resistive <input type="checkbox"/> PCT |                          |
| <b>Certification</b>           | CE/FCC  |                          |
| <b>Marine Type Approval</b>    | IEC 60945 BV Marine and IACS-E10 Approval                       |                          |



Specifications are subject to change without notice. All brands or product names are trademarks or registered trademarks of their respective companies.

# 21" Specifications

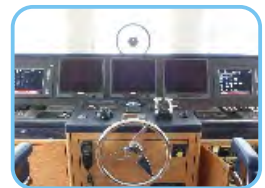
## Features:

- 1000 nits Sunlight Readable LCD
- LED Backlight
- Wide Operating Temperature
- Advanced Optical Bonding (AOT)
- Resistive & PCT Touch Support
- Front IP65 Design
- 9-36V DC Input
- Picture In Picture Function



## IP65 Sunlight Readable Marine Display

|                                |   |
|--------------------------------|---|
| <b>Model Number</b>            | <b>NPD2115</b>  |
| <b>Description</b>             | 21.5" IP65 Sunlight Readable Marine Display                     |
| <b>LCD Display</b>             |   |
| <b>Backlight</b>               | 21.5" LED Backlight   |
| <b>Active Display Area</b>     | 476.64x268.11 mm  |
| <b>Brightness</b>              | 1000 cd/m <sup>2</sup>  |
| <b>Resolution</b>              | 1920x1080(Full HD)  |
| <b>Contrast Ratio</b>          | 1000:1  |
| <b>Pixel Pitch (mm)</b>        | 0.248(H) x 0.248(V)   |
| <b>Viewing Angle</b>           | 170°(H), 160°(V)  |
| <b>Display Color</b>           | 16.7M   |
| <b>Response Time</b>           | 5 ms  |
| <b>Inputs</b>                  | VGAX2, DVIX2, Composite x3, RS232x1                             |
| <b>Picture in Picture</b>      | 3 Stages (child, split and wide screen)                         |
| <b>Mechanical</b>              |   |
| <b>IP Rating</b>               | Fascial waterproof to IP65 standards when console mounted.      |
| <b>Construction</b>            | Rugged Aluminum Alloy Chassis                                   |
| <b>Mounting</b>                | Panel (Flush) mount, VESA mount                                 |
| <b>Dimension (WxHxD)</b>       | 525.8mm x 345.2 mm x 56.4mm                                     |
| <b>Net Weight</b>              | 5.5kg   |
| <b>Power</b>                   |   |
| <b>Voltage</b>                 | DC Input Voltage: DC 9~36V                                      |
| <b>Power Consumption</b>       | 26W   |
| <b>Environmental</b>           |   |
| <b>Operating Temperature</b>   | -10°C~50°C (-14°F~122°F)  |
| <b>Storage Temperature</b>     | -20°C~70°C (-4°F~158°F)   |
| <b>Touch Screen (Optional)</b> | <input type="checkbox"/> Resistive <input type="checkbox"/> PCT |
| <b>Certification</b>           | CE/FCC  |
| <b>Marine Type Approval</b>    | IEC 60945 BV Marine and IACS-E10 Approval                       |

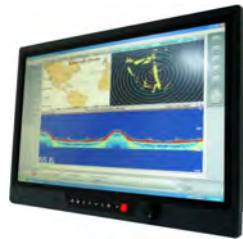




# 24" Specifications

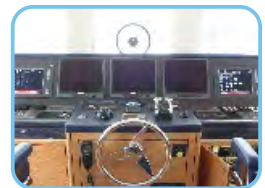
## Features:

- 1000 nits Sunlight Readable LCD
- LED Backlight
- Wide Operating Temperature
- Advanced Optical Bonding (AOT)
- Resistive Touch Support
- Front IP65 Design
- 9-36V DC Input
- Picture In Picture Function



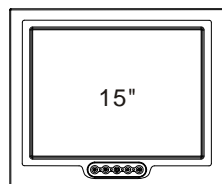
## IP65 Sunlight Readable Marine Display

|                                |   |
|--------------------------------|---|
| <b>Model Number</b>            | <b>NPD2425</b>  |
| <b>Description</b>             | 24" IP65 Sunlight Readable Marine Display                       |
| <b>LCD Display</b>             |   |
| <b>Backlight</b>               | 24" LED Backlight   |
| <b>Active Display Area</b>     | 531.36x298.89 mm  |
| <b>Brightness</b>              | 1000 cd/m <sup>2</sup>  |
| <b>Resolution</b>              | 1920x1080(Full HD)  |
| <b>Contrast Ratio</b>          | 3000:1  |
| <b>Pixel Pitch (mm)</b>        | 0.276(H) x 0.276(V)   |
| <b>Viewing Angle</b>           | 178°(H), 178°(V)  |
| <b>Display Color</b>           | 16.7M   |
| <b>Response Time</b>           | 25 ms   |
| <b>Inputs</b>                  | VGAX2, DVIX2, Composite x3, RS232x1                             |
| <b>Picture in Picture</b>      | 3 Stages (child, split and wide screen)                         |
| <b>Mechanical</b>              |   |
| <b>IP Rating</b>               | Fascial waterproof to IP65 standards when console mounted.      |
| <b>Construction</b>            | Rugged Aluminum Alloy Chassis                                   |
| <b>Mounting</b>                | Panel (Flush) mount, VESA mount                                 |
| <b>Dimension (WxHxD)</b>       | 584.2mm x 374.8 mm x 57.7mm                                     |
| <b>Net Weight</b>              | 7.8kg   |
| <b>Power</b>                   |   |
| <b>Voltage</b>                 | DC Input Voltage: DC 9~36V                                      |
| <b>Power Consumption</b>       | 50W   |
| <b>Environmental</b>           |   |
| <b>Operating Temperature</b>   | -10°C~50°C (-14°F~122°F)  |
| <b>Storage Temperature</b>     | -20°C~70°C (-4°F~158°F)   |
| <b>Touch Screen (Optional)</b> | <input type="checkbox"/> Resistive <input type="checkbox"/> PCT |
| <b>Certification</b>           | CE/FCC  |
| <b>Marine Type Approval</b>    | IEC 60945 BV Marine and IACS-E10 Approval                       |

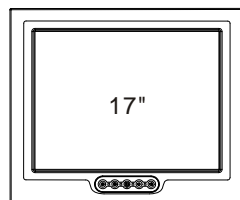


Specifications are subject to change without notice. All brands or product names are trademarks or registered trademarks of their respective companies.

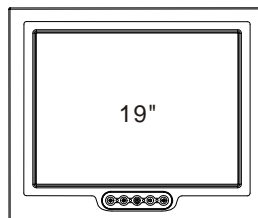
# Marine Panel PC



NPS1535



NPS1735



NPS1935

## NAVPIXEL™ Marine Panel PC

### IP65 Sunlight Readable Marine Grade Panel PC

NPS is a new series of NAVPIXEL™ Intel® Celeron M/ Core 2 Duo based design panel PC. This extremely high performance with low power consumption computing solution also supports SATA interface that provides higher data processing rate and lower CPU usage. Because of the special aluminum alloy casing design, NPS series can resist corrosion from most acids and alkaline working environments. In addition, the easy cleaning attribute makes it the first choice for strict hygiene workplaces such as hospital, marine industry, abattoirs and other food processing plants.

#### Main Features

- 1000nits Sunlight Readable LCD
- IP65 Front Waterproof Display
- Resistive Touch Support
- Advanced Optical Bonding (AOT) optional
- Resistive Touch/ AR Glass Support
- Long Life, Low Power Consumption LED Backlight
- Intel® Celeron M/ Core 2 Duo Based Design
- AC or DC Input
- Slim Bezel Design
- Anti-Shock and Anti-Vibration Resistance

#### Applications

- Marine
- Food Processing Factory
- Chemical
- Pharmaceutical
- POS



# 15" Specifications

## Features:

- 1000 nits Sunlight Readable Panel PC
- Processor: Intel® Celeron M/ Core 2 Duo
- Memory: SODIMM DDRII667 up to 4GB
- Rich I/O Interface
- IP65 Front Waterproof
- AC 100~200V Input or DC 9-36V



## IP65 Sunlight Readable Marine Panel PC

| Model Number          | NPS1535  |
|-----------------------|--|
| Description           | 15" IP65 Sunlight Readable Marine Panel PC   |
| <b>LCD Display</b>    |  |
| Backlight             | 15" LED Backlight  |
| Active Display Area   | 304.128(H)x228.096(V)  |
| Brightness            | 1000 nits  |
| Resolution            | 1024x768 (XGA)   |
| Contrast Ratio        | 700:1 (Typ)  |
| Touch Screen          | 5-Wire, Analog Resistive / AR Glass  |
| Optical               | AOT (Optional)   |
| <b>System</b>         |  |
| Processor             | Intel® Celeron M / Core 2 Duo  |
| Chip Set              | Intel® 945GM + ICH7M   |
| Memory                | DDR II DIMM 1GB up to 4GB  |
| Ethernet              | Intel® 82573L 10/100/1000Base-TX RJ45x2  |
| Storage               | SATA 2.5" HDD (Optional)   |
| I/O Port              | Audio Phone Jack (Line-in, Line-out, MIC-in) x 1<br>RJ45 x2, USB x4, COMx2 (RS232 x1, RS232 /422/485 x1)<br>DVI-I x1, VGA-out x 1, KB/MS PS2 x 1, Power AC-in x1 |
| BIOS                  | Award  |
| Wake on LAN           | Yes  |
| Watchdog Timer        | Generates a time-out system reset  |
| H/W Status Monitor    | Supports power supply voltages, fan speed and temperature monitoring   |
| Expansion Interface   | Mini PCI (internal)  |
| <b>Power</b>          |  |
| Voltage               | AC Input: AC 100~ 240V; DC Input (Optional)  |
| <b>Mechanical</b>     |  |
| IP Rating             | Fascial waterproof to IP65 standards when console mounted  |
| Construction          | Aluminum Alloy Chassis   |
| Mounting              | Panel (Flush) Mount , VESA75/VESA100, Stand Mount  |
| Dimension             | 386.5mm (W) x 320.2mm(H) x 91.6mm(D)   |
| Net Weight            | 5.4kg  |
| <b>Environmental</b>  |  |
| Operating Temperature | -10°C~40°C (14°F~104°F)  |
| Storage Temperature   | -20°C ~ 80°C (-4°F ~158°F)   |
| Operating Humidity    | 5~95% @ 40°C, non-condensing   |
| Certification         | Designed to meet CE/FCC  |

Specifications are subject to change without notice. All brands or product names are trademarks or registered trademarks of their respective companies.

# 17" Specifications

## Features:

- 1000 nits Sunlight Readable Panel PC
- Processor: Intel® Celeron M/ Core 2 Duo
- Memory: SODIMM DDRII667 up to 4GB
- Rich I/O Interface
- IP65 Front Waterproof
- AC 100~200V Input or DC 9-36V
- Picture In Picture Function



## IP65 Sunlight Readable Marine Panel PC

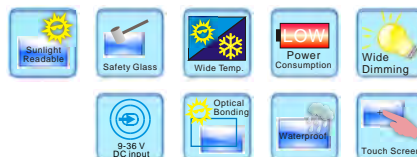
| Model Number          | NPS1735  |
|-----------------------|--|
| Description           | 17" IP65 Sunlight Readable Marine Panel PC   |
| <b>LCD Display</b>    |  |
| Backlight             | 17" LED Backlight  |
| Active Display Area   | 337.92(H)x270.336(V)   |
| Brightness            | 1000 nits  |
| Resolution            | 1280x1024(SXGA)  |
| Contrast Ratio        | 1000:1 (Typ)   |
| Touch Screen          | 5-Wire, Analog Resistive / AR Glass  |
| Optical               | AOT (Optional)   |
| <b>System</b>         |  |
| Processor             | Intel® Celeron M / Core 2 Duo  |
| Chip Set              | Intel® 945GM + ICH7M   |
| Memory                | DDR II DIMM 1GB up to 4GB  |
| Ethernet              | Intel® 82573L 10/100/1000Base-TX RJ45x2  |
| Storage               | SATA 2.5" HDD (Optional)   |
| I/O Port              | Audio Phone Jack (Line-in, Line-out, MIC-in) x 1<br>RJ45 x2, USB x4, COMx2 (RS232 x1, RS232 /422 /485 x1)<br>DVI-I x1, VGA-out x 1, KB/MS Ps2 x 1, Power AC-in x 1 |
| BIOS                  | Award  |
| Wake on LAN           | Yes  |
| Watchdog Timer        | Generates a time-out system reset  |
| H/W Status Monitor    | Supports power supply voltages, fan speed and temperature monitoring   |
| Expansion Interface   | Mini PCI (internal)  |
| <b>Power</b>          |  |
| Voltage               | AC Input: AC 100~ 240V; DC Input (Optional)  |
| <b>Mechanical</b>     |  |
| IP Rating             | Fascial waterproof to IP65 standards when console mounted  |
| Construction          | Aluminum Alloy Chassis   |
| Mounting              | Panel (Flush) Mount , VESA75/VESA100, Stand Mount  |
| Dimension             | 409.5mm (W) x 363.1mm(H) x 91.3mm(D)   |
| Net Weight            | 6.3kg  |
| <b>Environmental</b>  |  |
| Operating Temperature | -10°C~40°C (14°F~104°F)  |
| Storage Temperature   | -20°C ~ 80°C (-4°F ~158°F)   |
| Operating Humidity    | 5~95% @ 40°C, non-condensing   |
| Certification         | Designed to meet CE/FCC  |

Specifications are subject to change without notice. All brands or product names are trademarks or registered trademarks of their respective companies.

# 19" Specifications

## Features:

- 1000 nits Sunlight Readable Panel PC
- Processor: Intel® Celeron M/ Core 2 Duo
- Memory: SODIMM DDRII667 up to 4GB
- Rich I/O Interface
- IP65 Front Waterproof
- AC 100~200V Input or DC 9-36V
- Picture In Picture Function



## IP65 Sunlight Readable Marine Panel PC

| Model Number          | NPS1935  |
|-----------------------|--|
| Description           | 19" IP65 Sunlight Readable Marine Panel PC   |
| <b>LCD Display</b>    |  |
| Backlight             | 19" LED Backlight  |
| Active Display Area   | 376.32(H)x301.06(V)  |
| Brightness            | 1000 nits  |
| Resolution            | 1280x1024 (SXGA)   |
| Contrast Ratio        | 1000:1 (Typ)   |
| Touch Screen          | 5-Wire, Analog Resistive / AR Glass  |
| Optical               | AOT (Optional)   |
| <b>System</b>         |  |
| Processor             | Intel® Celeron M / Core 2 Duo  |
| Chip Set              | Intel® 945GM + ICH7M   |
| Memory                | DDR II DIMM 1GB up to 4GB  |
| Ethernet              | Intel® 82573L 10/100/1000Base-TX RJ45x2  |
| Storage               | SATA 2.5" HDD (Optional)   |
| I/O Port              | Audio Phone Jack (Line-in, Line-out, MIC-in) x 1<br>RJ45 x2, USB x4, COMx2 (RS232 x1, RS232 /422/485 x1)<br>DVI-I x1, VGA-out x 1, KB/MS PS2 x 1, Power AC-in x1 |
| BIOS                  | Award  |
| Wake on LAN           | Yes  |
| Watchdog Timer        | Generates a time-out system reset  |
| H/W Status Monitor    | Supports power supply voltages, fan speed and temperature monitoring   |
| Expansion Interface   | Mini PCI (internal)  |
| <b>Power</b>          |  |
| Voltage               | AC Input: AC 100~ 240V; DC Input (Optional)  |
| <b>Mechanical</b>     |  |
| IP Rating             | Fascial waterproof to IP65 standards when console mounted  |
| Construction          | Aluminum Alloy Chassis   |
| Mounting              | Panel (Flush) Mount , VESA75/VESA100, Stand Mount  |
| Dimension             | 447mm (W) x 390.6mm(H) x 91.5mm(D)   |
| Net Weight            | 7.2kg  |
| <b>Environmental</b>  |  |
| Operating Temperature | -10°C~40°C (14°F~104°F)  |
| Storage Temperature   | -20°C ~ 80°C (-4°F ~158°F)   |
| Operating Humidity    | 5~95% @ 40°C, non-condensing   |
| Certification         | Designed to meet CE/FCC  |

Specifications are subject to change without notice. All brands or product names are trademarks or registered trademarks of their respective companies.

# Ordering Information

## NPD Series

| Part Number       | Description  |
|-------------------|--|
| NPD0835-ETAW-A01  | 8.4", 1000nits, SVGA, Touch-usb. LID08A, AD5621G, WP, AOT, V01   |
| NPD0835-EGAW-A01  | 8.4", 1000nits, SVGA, LID08A, O/F, AR Glass, AD5621G, WP, AOT, V01                                       |
| NPD1236-EGAW-G01  | 12", 1000nits, XGA, AR glass. LID12B02, AD2662, WP, AOT, V01   |
| NPD1236-EGAW-G011 | 12", 1000nits, XGA, AR glass. LID12B02, AD2662, WP, AOT. with adaptor, V01                               |
| NPD1236-ETAW-G01  | 12", 1000nits, XGA, Touch-usb. Transparency:80%, LID12B02. AD2662, WP, AOT, V01                          |
| NPD1236-ETAW-G011 | 12", 1000nits, XGA, Touch-usb. (Transparency:80%) LID12B02. AD2662, WP, AOT, with adaptor. V01           |
| NPD1555-EGAW-G01  | 15", 1000nits, XGA, AR glass. LID15B01, AD2662, WP, AOT, V01   |
| NPD1555-EGAW-G011 | 15", 1000nits, XGA, AR glass. LID15B01, AD2662, WP, AOT. with adaptor, V01                               |
| NPD1555-ETAW-G01  | 15", 1000nits, XGA, Touch-usb. (Transparency:80%), LID15B01. AD2662, WP, AOT, V01                        |
| NPD1555-ETAW-G011 | 15", 1000nits, XGA, Touch-usb. (Transparency:80%), LID15B01. AD2662, WP, AOT, with adaptor. V01          |
| NPD1744-EGAW-H01  | 17", 1000nits, SXGA, AR glass. LID17B01, AD8668, WP, AOT, V01  |
| NPD1744-EGAW-H011 | 17", 1000nits, SXGA, AR glass. LID17B01, AD8668, WP, AOT. with adaptor, V01                              |
| NPD1744-ETAW-H01  | 17", 1000nits, SXGA, Touch-usb. Transparency:80, LID17B01. AD8668, WP, AOT, V01                          |
| NPD1744-ETAW-H011 | 17", 1000nits, SXGA, Touch-usb. (Transparency:80%), LID17B01. AD8668, WP, AOT, with adaptor. V01         |
| NPD1954-EGAW-H01  | 19", 1000nits, SXGA, AR glass. LID19B02, AD8668, WP, AOT, V01  |
| NPD1954-EGAW-H011 | 19", 1000nits, SXGA, AR glass. LID19B02, AD8668, WP, AOT. with adaptor, V01                              |
| NPD1954-ETAW-H01  | 19", 1000nits, SXGA, Touch-usb. (Transparency:80%), LID19B02. AD8668, WP, AOT, V01                       |
| NPD1954-ETAW-H011 | 19", 1000nits, SXGA, Touch-usb. (Transparency:80%), LID19B02. AD8668, WP, AOT, with adaptor. V01         |
| NPD2115-EGAW-H01  | 21.5", 1000nits, FHD, AR Glass. LID21, AD8668, WP, VR, AOT, V01  |
| NPD2115-EGAW-H011 | 21.5", 1000nits, FHD, AR Glass. LID21, AD8668, WP, VR, AOT. with adaptor, V01                            |
| NPD2115-ETAW-H01  | 21.5", 1000nits, FHD, Touch-usb. (Transparency:80%), LID21. AD8668, WP, VR, AOT, V01                     |
| NPD2115-ETAW-H011 | 21.5", 1000nits, FHD. T/OT-5w-res-usb. (Transparency:80%), LID21. AD8668, WP, VR, AOT. with adaptor, V01 |
| NPD2425-EGAW-H01  | 24", 1000nits, FHD, AR Glass. LID24, AD8668, WP, VR, AOT, V01  |
| NPD2425-EGAW-H011 | 24", 1000nits, FHD, AR Glass. LID24, AD8668, WP, VR, AOT. with adaptor, V01                              |
| NPD2425-ETAW-H01  | 24", 1000nits, FHD. T/OT-5w-res-usb. (Transparency:80%), LID24. AD8668, WP, VR, AOT, V01                 |
| NPD2425-ETAW-H011 | 24", 1000nits, FHD. T/OT-5w-res-usb. (Transparency:80%), LID24. AD8668, WP, VR, AOT. with adaptor, V01   |

# Ordering Information

## NPS Series

| Part Number          | Description   |
|----------------------|---|
| NPS1535-ETAW-142-A01 | 15"LED B/L 1000nits, Touch.Screen(Transparency:80%),Intel.Celeron M 1.86GHz,DDR II DIMM.1GB,RJ45*2,USB*4,COM*2,AC.100~240V,HDD/250GB,AOT,WP   |
| NPS1535-ETAW-142-A02 | 15"LED B/L 1000nits.Touch.Screen(Transparency:80%).Intel.Celeron M1.86GHz,DDR II.DIMM 1GB,RJ45*2,USB*4,COM*2.DC10~30V,HDD/250GB,AOT,WP        |
| NPS1535-ETAW-363-A01 | 15" LED B/L 1000Nits, Touch.Screen(Transparency:80%).Intel Core 2 Duo 2.16GHz.DDR II DIMM 2GB,RJ45*2,USB*4.COM*2,AC 100~240V,HDD/250GB.AOT,WP |
| NPS1535-ETAW-363-A02 | 15"LED B/L 1000Nits.Touch Screen(Transparency:80%).IntelCore 2 Duo2.16GHz,DDRII.DIMM 2GB,RJ45*2,USB*4,COM*2.DC10~30v,HDD/250GB,AOT,WP         |
| NPS1735-ETAW-142-A01 | 17"LED B/L 1000nits.Touch Screen(Transparency:80%).IntelCeleron M 1.86GHz,DDR II.DIMM 1GB,RJ45*2,USB*4,COM*2.AC 100~240V,HDD/250GB,AOT,WP     |
| NPS1735-ETAW-142-A02 | 17" LED B/L 1000nits.Touch Screen(Transparency:80%).Intel Celeron M 1.86GHz,DDR II.DIMM 1GB,RJ45*2,USB*4,COM*2.DC10~30V,HDD/250GB,AOT,WP      |
| NPS1735-ETAW-363-A01 | 17"LED B/L 1000Nits,Touch.Screen(Transparency:80%).Intel Core 2 Duo 2.16GHz.DDR II DIMM 2GB,RJ45*2,USB*4.COM*2,AC 100~240V,HDD/250GB.AOT,WP   |
| NPS1735-ETAW-363-A02 | 17"LED B/L 1000Nits,Touch.Screen(Trensparency:80%).Intel Core 2 Duo 2.16GHz.DDR II DIMM 2GB,RJ45*2,USB*4.COM*2,DC10~30V,HDD/250GB.AOT,WP      |
| NPS1935-ETAW-142-A01 | 19" LED B/L 1000nits.Touch Screen(Transparency:80%).Intel Celeron M 1.86GHz,DDR II.DIMM 1GB,RJ45*2,USB*4,COM*2.AC 100~240V,HDD/250GB,AOT,WP   |
| NPS1935-ETAW-142-A02 | 19" LED B/L 1000nits , Touch.Screen(Transparency:80),Intel.Celeron M 1.86GHz,DDR II DIMM.1GB,RJ45*2,USB*4,COM*2.DC10~30V,HDD/250GB,AOT,WP     |
| NPS1935-ETAW-363-A01 | 19"LED B/L 1000Nits.Touch Screen(Transparency:80%).IntelCore 2 Duo2.16GHz,DDRII.DIMM 2GB,RJ45*2,USB*4,COM*2.AC 100~240V,HDD/250GB,AOT,WP      |
| NPS1935-ETAW-363-A02 | 19",LED B/L 1000Nits.Touch Screen(Transparency:80%).Intel Core2 Duo 2.16GHz.DDR II DIMM 2GB,RJ45*2,USB*4.COM*2,DC10~30V,HDD/250GB,AOT,WP      |