



OUR GLOBAL
COMPETENCE
CENTRES

 APOLLO DISPLAY
TECHNOLOGIES



 DISTEC



 DISPLAY
TECHNOLOGY



Datasheet

IF422-00

IF422-00 LVDS/TTL + LED Driver Ortustech

ZU-02-422

Version 1.2

09.01.2020

The information contained in this document has been carefully researched and is, to the best of our knowledge, accurate. However, we assume no liability for any product failures or damages, immediate or consequential, resulting from the use of the information provided herein. Our products are not intended for use in systems in which failures of product could result in personal injury. All trademarks mentioned herein are property of their respective owners. All specifications are subject to change without notice.

Table of Contents

1	Revision History	3
2	Overview	4
3	General Features	4
4	Absolut Maximum Ratings	4
5	Electrical Specification	5
6	Mechanical Specification.....	5
7	Connectors.....	6
7.1	Input Connectors.....	6
7.2	Output Connectors.....	7
8	Ordering Information	7

preliminary

1 Revision History

Date	Rev.No.	Description	Page
13.03.2019	1.0	Initial version	All
29.03.2019	1.1	Add LVDS receiver description; Ordering Information	4,6,7
09.01.2020	1.2	Two new Ortustech TFT displays added	4

preliminary

2 Overview

The IF422-00 is an interface board with an integrated LVDS to TTL converter and LED driver for Ortustech panels.

3 General Features

Integrated +3.3V LVDS Receiver TI DS90CF386
 Integrated LED driver TI TPS61158
 Backlight control via PWM
 Standby/Enable control
 Compatible with 24V Power Networks combined with Prisma 24V series

Designed for following Ortustech displays:

Distec part number:	OR-20-005	COM35H3P08ULC 3,5/Blan1/480x640/250cd
Distec part number:	OR-20-021	COM35H3P39ULC 3,5/Blan1/480x640/250cd
Distec part number:	OR-20-002	COM43H4M85ULC 4,3/Blan2/WVGA/400cd
Distec part number:	OR-20-023	COM43H4N58ULC 4,3/Blan2/480x800/400cd

4 Absolut Maximum Ratings

Item	Symbol	Min.	Max	Unit	Note
LED Supply Voltage	V_{LED}	9	35	VDC	1, 2
LVDS Supply Voltage	V_{CC}	2.8	4	VDC	1, 2
Control Voltages	$V_{EN}, V_{PDIM}, V_{ADMIM}$	0.3	6.3	V	2
Storage Temperature	T_{st}	-30	+80	°C	2
Operating Temperature	T_{op}	-20	+70	°C	2, 3

Note (1) Within operating temperature range.

Note (2) Permanent damage to the device may occur if maximum values are exceeded.

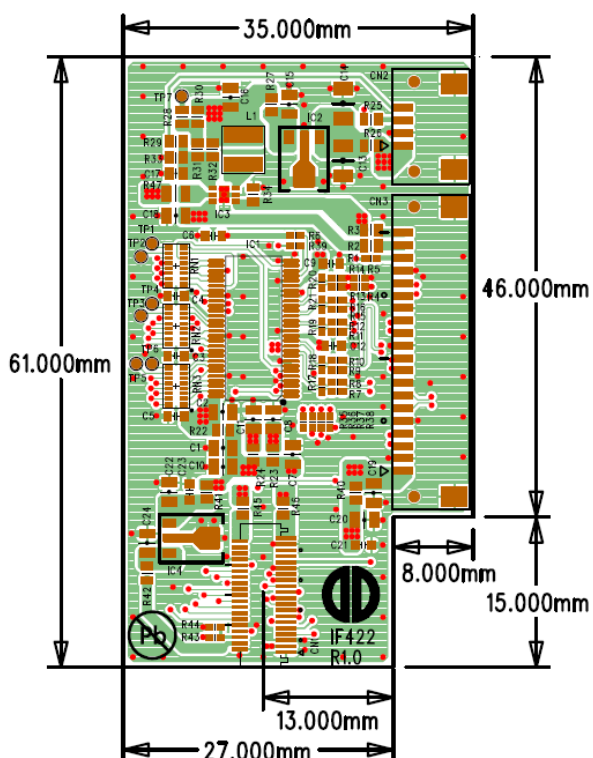
Note (3) In the upper range of T_{OP} total output power as well as the heat dissipation/cooling has to be checked. Forced airflow might be required.

5 Electrical Specification

Item	Symbol	Min.	Typ.	Max	Unit	Note
LVDS Supply Voltage	V_{CC}	3	3.3V	3.6	VDC	
LVDS Input Power	P_{VCC}		1.93	2.16	W	
LVDS Current	I_{VCC}		585	600	mA	
LED Supply Voltage	V_{LED}	10	12	24	VDC	
LED Input Power	P_{LED}		0.97	1.1	W	
LED Current	I_{LED}		10		mA	BLL
Efficiency			88		%	
Min. On Level voltage	V_{EN}, V_{PDIM}	1.2	3.3	5.5	V	
Max. Off Level voltage	V_{EN}, V_{PDIM}			0.4	V	
PWM Frequency	F_{PWM}	20	20	100	kHz	
PWM Duty	D_{PWM}	1		100	%	
PWM Voltage	V_{PWM}		3.3		V	

6 Mechanical Specification

Item	Description	Note
Length	61 mm	± 0.2 mm
Width	35 mm	± 0.2 mm
Height (top side)	tbd mm	± 0.2 mm
Height (PCB)	1.6 mm	± 0.1 mm
Height (Bottom)	0.0 mm	No components on bottom side



7 Connectors

CON	Description	Type	Manufacturer
CN1	Panel Connector	FH23-39S-0.3SHW(05)	Hirose
CN2	Backlight driver	DF14-4P-1.25H(26)	Hirose
CN3	LVDS Data	DF14-20P-1.25H(26)	Hirose

7.1 Input Connectors

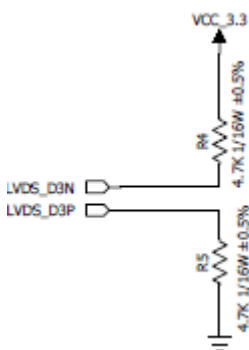
CN2 Backlight Driver

Pin	Signal	Description
1	V _{LED}	LED Supply Voltage
2	GND	Ground
3	EN	Backlight on/off control
4	PDIM	PWM Brightness control

CN3 LVDS Data (TI DS90CF386 LVDS Receiver)

Pin	Signal	Description	Pin	Signal	Description
1	V _{CC}	LVDS Power	11	GND	Ground
2	GND	Ground	12	R1+	LVDS DATA1(+)
3	R3+	LVDS DATA3(+) ₁	13	R1-	LVDS DATA1(-)
4	R3-	LVDS DATA3(-) ₁	14	GND	Ground
5	GND	Ground	15	R0+	LVDS DATA0(+)
6	R2+	LVDS DATA2(+)	16	R0-	LVDS DATA0(-)
7	R2-	LVDS DATA2(-)	17	GND	Ground
8	GND	Ground	18	NC	Not connected
9	CLK+	LVDS Clock(+)	19	NC	Not connected
10	CLK-	LVDS Clock(-)	20	NC	Not connected

Note 1: R3- is pulled high, R3+ is pulled down



7.2 Output Connectors

CN1 Panel Connector

Pin	Signal	Description	Pin	Signal	Description
1	VSS	Ground	21	D14	Green
2	VSS	Ground	22	D15	Green MSB
3	VDD	Panel Power input	23	D20	Red LSB
4	VCCIO	Logic Power input	24	D21	Red
5	GND	Ground	25	D22	Red
6	RESETB	Sys Reset (Low active)	26	D23	Red
7	HSYNC	Horizontal sync (negative polarity)	27	D24	Red
8	VSYNC	Vertical sync (negative polarity)	28	D25	Red MSB
9	CLK	Clock (Data input on falling edge)	29	VSS	Ground
10	VSS	Ground	30	DE	Input data effective signal ("H")
11	D00	Blue LSB	31	STBYB	Standby Signal
12	D01	Blue	32	Test1	Connect to Ground
13	D02	Blue	33	NC	No Connection
14	D03	Blue	34	NC	No Connection
15	D04	Blue	35	NC	No Connection
16	D05	Blue MSB	36	NC	No Connection
17	D10	Green LSB	37	Test2	Connect to Ground
18	D11	Green	38	BLH	LED driver source (A)
19	D12	Green	39	BLL	LED driver source (C)
20	D13	Green			

8 Ordering Information

Part Number	Description	Note
ZU-02-422	IF422-00 LVDS/TTL + LED Driver Ortustech	
OR-03-003	COM35H3P08ULC-IF 3,5/BI1/480x640/250cd+C	Preassembled interface
OR-03-004	COM43H4M85ULC-IF 4,3/BI2/WVGA/400cd+C	Preassembled interface
KA-31-052	Cable PMini-HDMI-DP / IF422-00 50mm	Prisma LVDS cable
KA-31-053	Conv.cable PMini-HDMI-DP / IF422-00 70mm	Prisma Backlight cable
KI-52-012	3,5 COM35H3P08ULC-IF/PrismaMINI-HDMI-DP	PrismaMINI Kit
KI-52-013	4,3 COM43H4M85ULC-IF/PrismaMINI-HDMI-DP	PrismaMINI Kit

Our company network supports you worldwide with offices in Germany, Austria, Switzerland, the UK and the USA. For more information please contact:

Headquarters

Germany



FORTEC Elektronik AG

Augsburger Str. 2b
82110 Germering

Phone: +49 89 894363-0
E-Mail: sales@fortecag.de
Internet: www.fortecag.de

Fortec Group Members

Austria



FORTEC Elektronik AG

Office Vienna

Nuschinggasse 12
1230 Wien

Phone: +43 1 8673492-0
E-Mail: office@fortec.at
Internet: www.fortec.at

Germany



Distec GmbH

Augsburger Str. 2b
82110 Germering

Phone: +49 89 894363-0
E-Mail: info@distec.de
Internet: www.distec.de



FORTEC Elektronik AG

Lechwiesenstraße 9
86899 Landsberg am Lech

Phone: +49 8191 91172-0
E-Mail: sales@fortecag.de
Internet: www.fortecag.de

Switzerland



ALTRAC AG

Bahnhofstraße 3
5436 Würenlos

Phone: +41 44 7446111
E-Mail: info@altrac.ch
Internet: www.altrac.ch

United Kingdom



Display Technology Ltd.

Osprey House, 1 Osprey Court
Hichingbrooke Business Park
Huntingdon, Cambridgeshire, PE29 6FN

Phone: +44 1480 411600
E-Mail: info@displaytechnology.co.uk
Internet: www.displaytechnology.co.uk

USA



Apollo Display Technologies, Corp.

87 Raynor Avenue,
Unit 1 Ronkonkoma,
NY 11779

Phone: +1 631 5804360
E-Mail: info@apolloDisplays.com
Internet: www.apolloDisplays.com